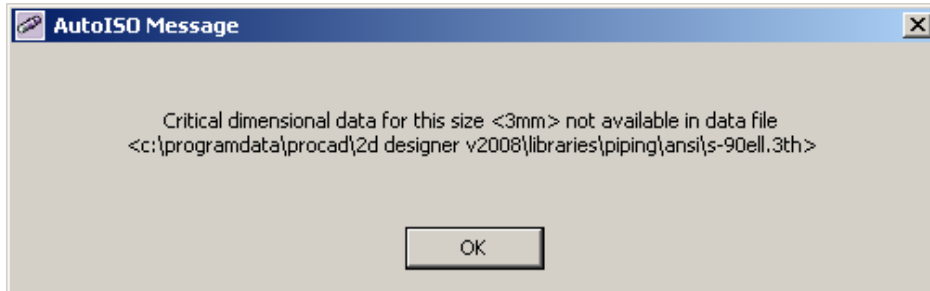


Critical Dimensional Data error in 2D DESIGNER

This error appears when you attempt to place a component that does not have required dimensional data. To remove the message and have the ability to place the item, you need to edit the dimensional table.



1. Using Windows Explorer, navigate to the file listed in the error message.
2. Open the file using Notepad.
3. Read the information at the top of the file, which defines each column of information.
4. Add the missing dimensions.

It is recommended that you back up the file before modifications are made.

Do not use tabs in the dimensional file. Do not change the order of the columns of data.